



Humanity Ahead

Smart Parking For Smart Cities



Surging ahead for a Better India... a Better World... a Better Future




"I always impress upon my clients "Your non-core activities is our core business" and let me tell you, this is as big as Rs. 1.3 trillion today.

We want to tap this opportunity by making BVG Artificial Intelligence enabled and a tech driven company.

My team will make it happen - well trained, skilled and up-skilled.

And at the heart of BVG, are its core values – Shram Pratishtha, Ethical Practices, Sustainability, and ESG.

I welcome you to join us in our growth story." 



Good intention leads to Growth

With humble beginning as a housekeeping company with just 8 people in 1997, BVG has today grown into one of India's largest and diversified services conglomerates with 582 clients. It all started with Swami Vivekananda's vision of 'Take Up One Idea...' that inspired Mr. Hanmantrao R. Gaikwad as an engineering student in 1991 who then decided to do something unique in life by keeping Bharat Vikas (India's Progress) at the core and to benefit citizens of the country.

Two years later, he started Bharat Vikas Pratishthan (BVP), a society to collect funds and help poor students get quality education. With his idea still taking shape, his career began with Tata Motors Pune in 1994, then known as Telco. BVP was now helping rural youth get jobs. In 1997, his dedicated effort, sincere commitment and care for the organisation helped Tata Motors save Rs. 2.5 crores. This awarded the maiden contract for BVP as the housekeeping contractor for Tata Motors Indica Plant and then the growth story of BVG started to unfold with businesses at multiple locations for multiple organisations touching multiple lives through its act.

It is this idea of Bharat Vikas that strings together all of BVG's service offerings - whether it is keeping India clean or maintained through its Facility Management Services, or providing Emergency Response Services, or caring environment by creating waste to wealth solutions by Solid Waste Management services and developing various construction facilities to make cities smart.

Vision to impact 10 crore lives by 2030

Mr. H.R. Gaikwad wants to positively impact 10 crore lives by 2030. BVG's all business verticals touch Humanity in all directions. Facility Management is all about Human Asset Management, Emergency Response Services is all about Human Care Management, Solid Waste Management is all about Human Services Management and various Special Projects are all about Human Life Enhancement.

In this journey, the organisation also envisages social, economic, and ecological empowerment by generating employment for Indian citizens and making India a healthier and better place to live through innovations in the environment sector. Looking forward, BVG wants to contribute and catalyze India's rapid progress towards being a developed country.

Mr. Hanmantrao R. Gaikwad

Chairman & Managing Director,
BVG India Limited

BVG - By the People, For the People

BVG has contributed significantly in generating employment opportunities in India. Till now, BVG has given employment to lakhs of people including many of them from rural India. BVG also hires unskilled workers, widows, uneducated youth, etc and trains them to provide world-class service to its clients. It is also a testament to BVG's ability to value, retain and nurture human relations and maximise potential of human minds, skills and abilities. BVG is connecting innovations from around the world, talent & its capabilities to shape a better, forward moving future for people.

**BVG is innovating and evolving for
a Better India Better World, Better Future!**

Services

Diversified Services.

One Mission

KEEPING HUMANITY AHEAD



Integrated Facility Management



Emergency (Response) Services Dial 108 & 100



Specialized Projects



Airports, Railways & Metros



Waste Management



Renewable Energy



Robotic Parking

582

SATISFIED CLIENTS

130 CITIES

25 STATES

5 UNION TERRITORIES

3000 MT

DAILY WASTE MANAGED
SOLID WASTE MANAGEMENT

1100+

SITES IN FACILITY MANAGEMENT
SERVICES & ALLIED PROJECTS

67 Lakhs

LIVES SAVED UNDER
EMERGENCY RESPONSE
SERVICES

Some of Our Valued Clients:



INTRODUCTION ▾

“Smart Parking” is a highly customizable solution for all your parking problems. Our unique designs and technology with a combination of mechanical devices, robotics, and advanced automation capabilities can be implemented in a variety of ways, shapes and sizes.

Smart Parking addresses the concerns of landowners (by maximizing the use of space), of builders (by minimizing cost of construction), of business managers (by minimizing operating costs) and of drivers (by offering greater security and ease of use). Using designs developed and improved by our well experienced team we are able to provide the most space saving and effective parking solutions which are simple to implement and operate.

We can design the system to accommodate automobiles of any dimensions and weight and to handle any number of automobiles simultaneously. We can park 108 cars in 2400 sq. ft. of land, the entire system is made of steel and civil construction only required for foundation. Upto 50 cars our systems are portable and can be easily assembled and dismantled as per the customer needs.

The product ▾

Premium Product Line: Circular Parking System: (Lesser Space & Full Automation)

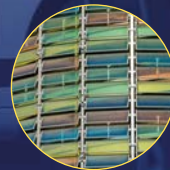




Reduced Carbon Footprint



Automated Car Wash



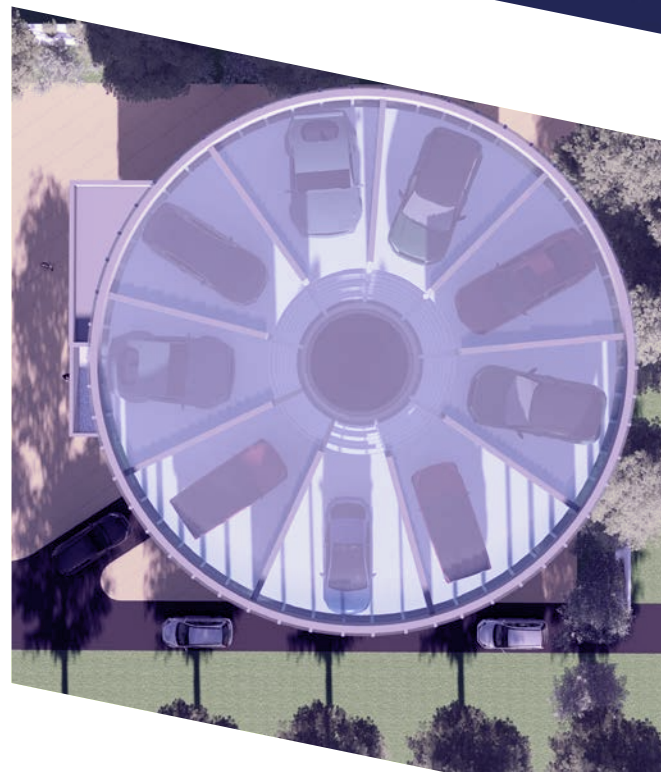
Green Energy

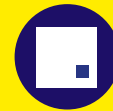
INCREASED PARKING CAPACITY

- ☐ We can park 108 cars in 2400 Sq. Ft. of land.
- ☐ Civil construction is required only for foundation.
- ☐ Entire steel structure.
- ☐ Portable upto 50 cars.

SAFE & SECURE

- ☐ Eliminates collision and damage risk.
- ☐ Prevent theft of vehicles and personal belongings.
- ☐ Provide personal security.
- ☐ Keeps pedestrians safe.





Lesser Space Consumption



Lesser Power Consumption



Cars Can Be Retrieved Using SMS/Web



Detects Fuel Leakages / Explosives



Portable



Complete Vehicle Safety



Works on Manual & Automated Dual Mode



Patented Lead Screw Lifting Mechanism

GREAT CUSTOMER EXPERIENCE

- ☐ High-quality valet parking experience (without the valet).
- ☐ Shorter retrieval period.
- ☐ Easy and worry free parking experience
- ☐ Automated Car Wash.

AUTOMATED PARKING MANAGEMENT SOFTWARE

- ☐ Remote site monitoring and management.
- ☐ Multi-site network management.
- ☐ Interface to revenue control systems.
- ☐ Mobile/Web technologies support.
- ☐ Extensive reporting and statistical capabilities, such as occupancy, car history, peak times.



KEY SYSTEM COMPONENTS

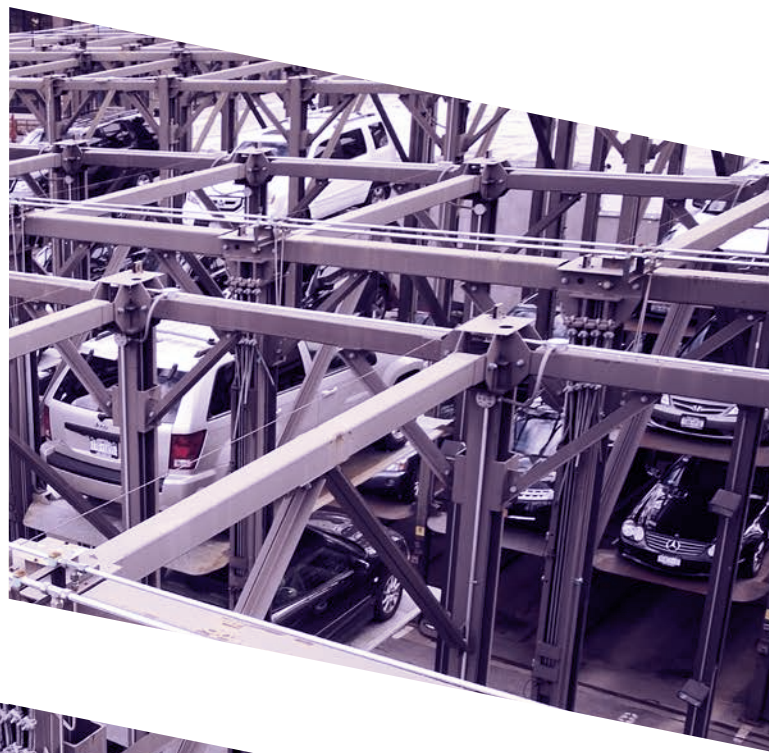
- ☐ Simply swipe your card to retrieve your car.
- ☐ Same lift can be used to park and retrieve vehicles randomly.
- ☐ The vehicle is securely held at its four wheels.
- ☐ Minimize contact with the vehicle and minimizing handling time.
- ☐ Adaptable facade - can look exactly like its neighbors.

SUPPORT: ONE POINT CONTACT

- ☐ Mechanical Components.
- ☐ Control and electrical systems.
- ☐ Software systems.
- ☐ Secured remote access.
- ☐ Optional online video monitoring.
- ☐ Preventive and periodic maintenance.
- ☐ Spare parts.

SERVICE: ONE POINT CONTACT

- ☐ 24 X 7 X 365 hotline.
- ☐ Permanent availability.
- ☐ On-site, on-call visits.
- ☐ Production support and training.
- ☐ Documentation.



FOR ANIMATED & DEMO MODEL

https://www.youtube.com/watch?v=RGl1CQw_Pyk

Our other products ▸

Tower Parking:

Our Tower Parking is a fully automated parking system that uses a vertical tower to store and retrieve cars. It's a space-efficient solution that can fit multiple cars in a small area, and it can be customized to fit different types of vehicles. It's also fully automated, which means it can quickly retrieve cars and reduce the time drivers spend searching for a parking spot.



Stack Parking :

Our Stack Parking is a fully automated vertical parking system that allows for multiple cars to be parked in a small area. It's ideal for areas where space is limited, and it can be customized to fit different types of vehicles. It's a cost-effective solution for parking, and it also helps to reduce traffic congestion.



Puzzle Parking:

This is a space-efficient solution for parking cars. It helps to increase your space means we will be able to park 05 to 08 cars in a space of 03 Cars which depends on the type of puzzle system used in the project. It is Independent in operations and has a fully automated parking system that can save drivers time by quickly retrieving their vehicle, and it also helps to reduce traffic congestion.



Rotary Parking:

Our Rotary Parking is ideal for areas with limited space and high traffic volume. It can accommodate a large number of cars in a small area, and it provides easy access to parking spots. This system is also fully automated, which means it can quickly retrieve cars, saving drivers time.



Scissor Parking:

Scissor Parking System has an automatic operation. It can quickly retrieve cars and reduce the time drivers spend searching for a parking spot. It helps to park 02 -03 cars in a space of one car in a very smart way. It's ideal for areas where space is limited, and it provides a safe and secure place to park cars.



Parking Management Products ▸

Our parking management system is designed to provide an efficient and effective way to manage our parking lots. It includes the enforcement of parking regulations, the implementation of parking fees and fines, and the use of technology such as access control, automated ticketing, and license plate recognition. Additionally, our system

utilizes available public transit options, alternative transportation options, and a comprehensive parking plan in order to ensure that there is always a sufficient parking supply. Our system is an integral part of our parking management structure and helps to ensure that our parking lots are managed in a safe and efficient manner.

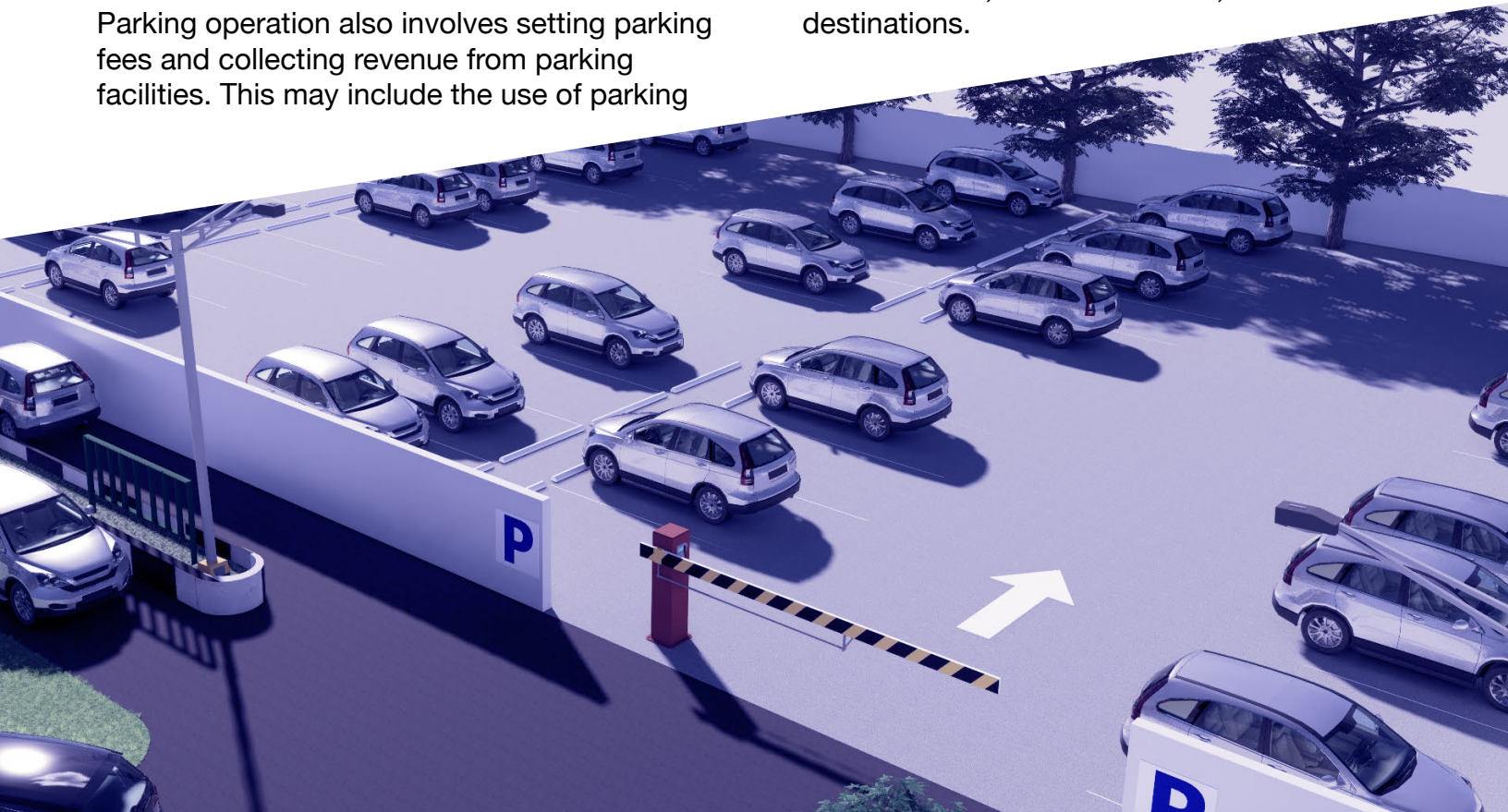
Parking Operations:

Our primary goals in parking operations are to ensure that parking facilities are well-maintained, organized, and efficient. This involves designing parking spaces to maximise available slots, providing appropriate signage and lighting to guide drivers, and implementing measures to improve traffic flow and reduce congestion.

Parking operation also involves setting parking fees and collecting revenue from parking facilities. This may include the use of parking

meters, pay-and-display machines, or mobile payment systems to collect fees from parkers.

We believe that an effective parking operation is essential for maintaining a well-functioning transportation system in urban areas, as parking facilities play a critical role in providing access to businesses, residential areas, and other destinations.



Access Control Systems:

Our parking access control system provides a secure way to manage access to and from any parking lots. It is a system that is composed of electronic card readers, key fobs, and other access control technology that requires users to have the proper authorization to gain access. Our system helps to ensure that only those with the proper authorization are able to access the parking lots, making them more secure and enforcing the regulations and fees.



Parking Policy:

Our parking policy making process takes into account the needs of the community, the availability of resources, and the available technology. This process includes the establishment of parking regulations and fees, the implementation of a parking enforcement system, and the use of technology such as access control, automated ticketing, and license plate recognition.



Parking Regulations:

In urban areas where parking can be challenging due to high demand and limited supply, we help drafting and setting up parking restrictions, parking permits, parking fees, parking meters, and time limits for parking. It also includes maps, diagrams, and other visual aids to help users understand the parking regulations in the respective areas.



Parking Enforcement:

Our parking enforcement products include technologies such as automatic license plate recognition (ALPR) systems that can quickly scan license plates and identify vehicles that are parked in violation of parking regulations. Our technology can help to identify and respond to parking violations more efficiently, reducing the need for manual checks and increasing the effectiveness of parking enforcement efforts.





**24-HOUR
ON CALL
SUPPORT**



**SERVICE &
MAINTENANCE**



**QUALITY
CONTROL**



**ASSEMBLY &
INSTALLATION**



**RELOCATION &
REMOVALS**



REFURBISHMENT



Humanity Ahead

Corporate Office: —————

**Midas Tower, 4th Floor, Phase 1, Rajiv Gandhi Infotech Park
Hinjawadi, Pune, Maharashtra - 411057**

CALL: 1-800-889-6249

www.bvgindia.com

autospatial@bvgindia.com

www.bvgautospatial.com